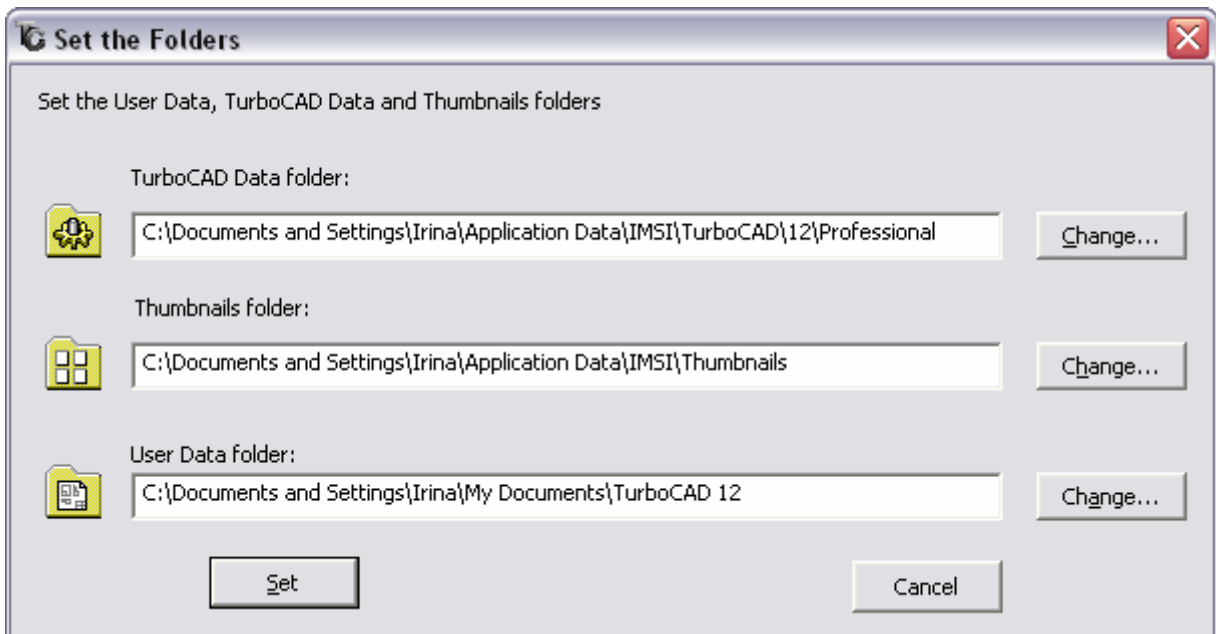


1. For the first step the patch 12.2 will look for the valid version of TurboCAD (US version 12.0 or 12.1).
- 2a. If a supported version is NOT FOUND, you will get a message and the patch installation will be canceled.
- 2b. If a supported version is FOUND, then the patch will look to see if you applied the 12.1 patch.
- 3a. If the 12.1 patch is NOT FOUND, then the 12.2 patch will go directly to the screen with Update button. During the patch installation, the custom user paths will be copied from:  
  
HKEY\_LOCAL\_MACHINE\SOFTWARE\IMSI\TurboCAD\12\Professional  
to  
HKEY\_CURRENT\_USER\Software\IMSI\TurboCAD\12\Professional.
- 3b. If the 12.1 patch is FOUND, the patch will run a path recovering utility, and you will see the following dialog:



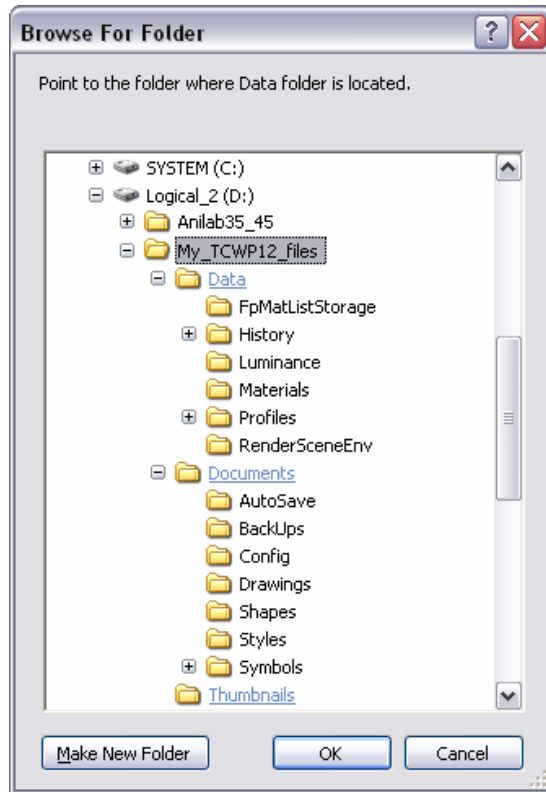
This dialog shows the default paths you would have seen during the installation of 12.0.

- 4a. If you did NOT MODIFY the paths, then you should just press the Set button to restore the default TurboCAD paths.  
The utility will verify that the paths are default and will NOT write them into:  
HKEY\_CURRENT\_USER\Software\IMSI\TurboCAD\12\Professional.

TurboCAD v12.2 will use the default paths, if they are not specified in the HKEY\_CURRENT\_USER of the System Registry.

- 4b. If you set CUSTOM paths previously, you will have to change the default paths in this dialog in order to restore those custom paths.

After pressing the Change button you will see the Browse for Folder dialog:



***Note:** If you changed the default paths to custom paths during the installation of TurboCAD v12, TurboCAD created subfolders **Data**, **Documents** and **Thumbnails** in custom user folders. For example, if I set all three paths to the same folder called "D:\My\_TCWP12\_files" the result would be that all three subfolders are located into one folder.*

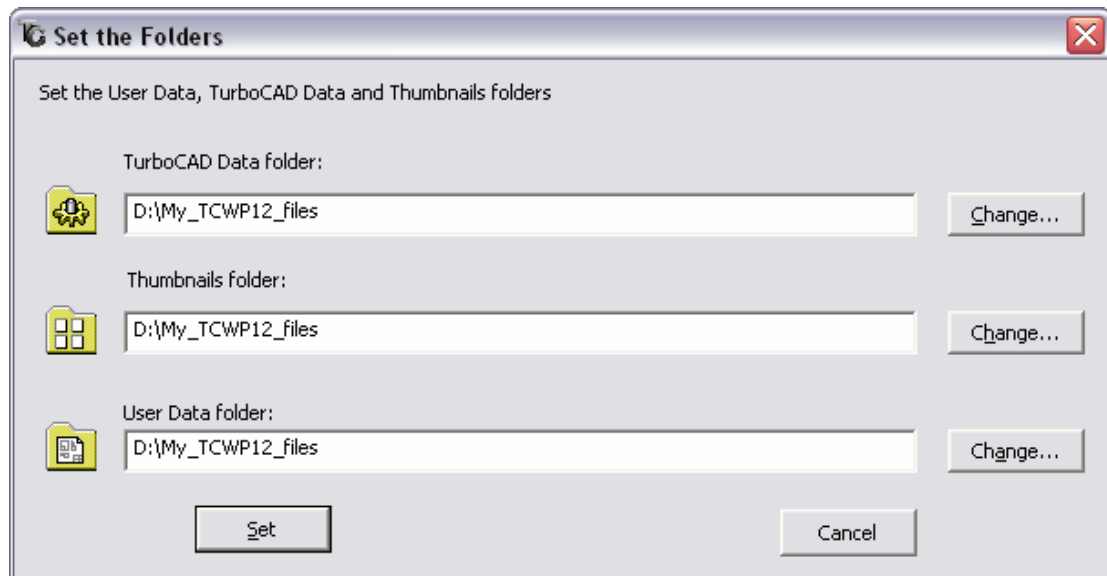
For **TurboCAD Data** folder you should select the folder, where the **Data** folder is located. Not the **Data** folder itself, but its **parent** folder (one level up).

The same rule applies for the other two paths:

For the **Thumbnails** folder you should select the parent folder that contains the **Thumbnail** folder.

For **User Data** folder, select the parent folder that contains the **User Data** folder.

*In the example noted above the dialog would contain the following information after the changes:*



Pressing the Set button will write these paths to:  
HKEY\_CURRENT\_USER\Software\IMSI\TurboCAD\12\Professional\  
and start the patch running.